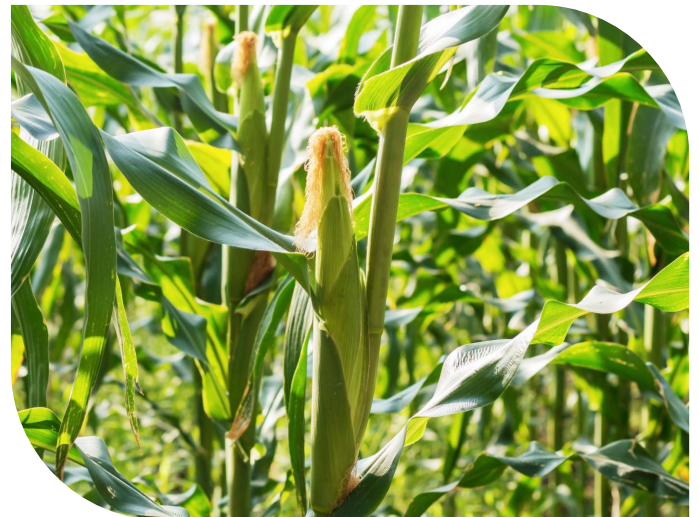




## Global Agro Ingredients Experts

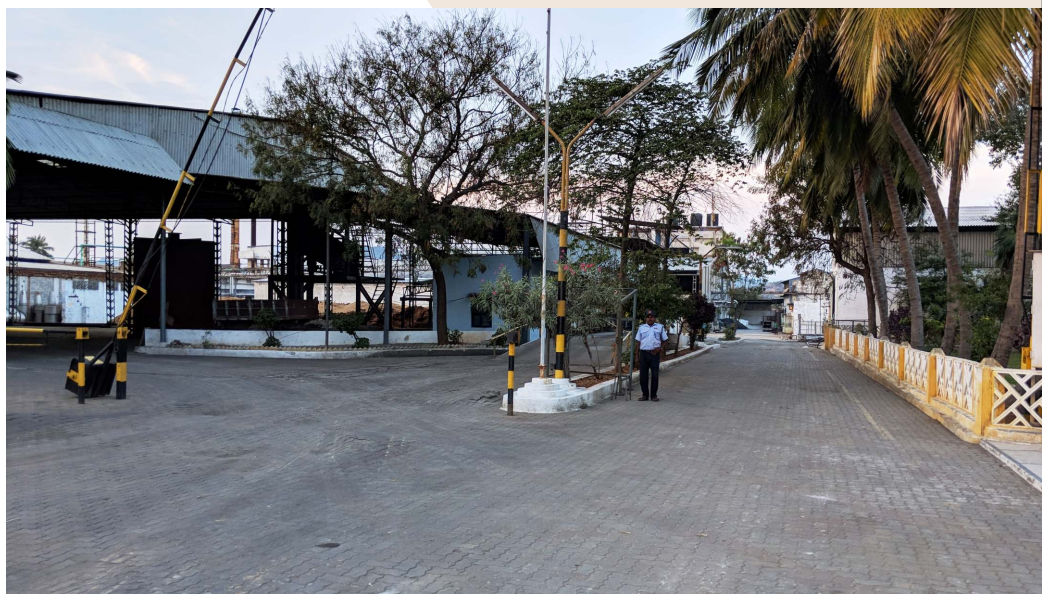


## COMPANY AT A GLANCE

- The journey of Santosh Limited begun from the year of 1990 as a trading house of commodity, starches and spices and further was diversified into Corn Wet Milling business.
- We are one of the largest producers of Starch based products in India having production capacity of more than 1,00,000 MTPA, and having total employee strength of 300 people across various locations.
- Easily reachable through Road, Rail, Air and Sea Port are the major manufacturing facilities available in southern India as Santosh Limited is located at Salem, Tamilnadu, India.
- Our plant is well equipped with state of art effluent treatment plant and we are constantly investing in green technologies and safety measures at all levels.
- We have more than 15 products in our basket range backed up with our technical support and expertise.



- Being an Export House we have our materialistic presence in more than 20 countries across the globe like South Asia, Africa, Latin America, Europe, Australia, New Zealand, South East Asia, Middle East, and others.
- Research & Development facility is located at our manufacturing unit that provides customer & Industry specific solutions developing new and better products. To know us better you can visit: <https://youtu.be/tEDsBKj0HqU>.
- Our units are accredited with ISO 9001: 2015 certificate.
- We show our presence to customers in their daily uses products, namely like toothpaste, medicines, paper, medicines, textiles, food products, adhesives, chemicals, oil drilling and many other applications.
- The main motto of Santosh Limited is Customer satisfaction through offering customised starch solutions which are competitive in price, with consistent quality, and guaranteed & timely supply.



# FOUNDER & MANAGEMENT



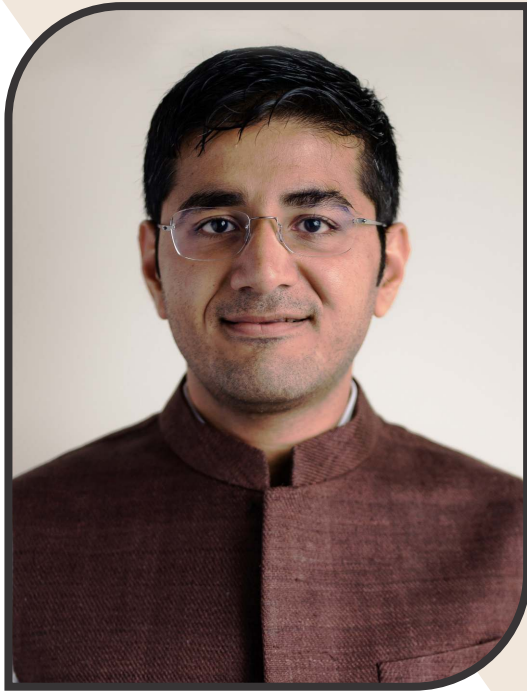
**Late Shri Sohanlalji Chowdhary**  
(Founder)  
1937-2014

Santosh Group was founded in the year 1951 by Late Shri Sohanlalji Chowdhary, and it has been a remarkable journey of more than 65 years. It was his passion and drive for developing quality products in order to provide the best solutions to Industries that helped form this company. It was purely his unparalleled motivation that turned his hard work into a world-class manufacturing units.



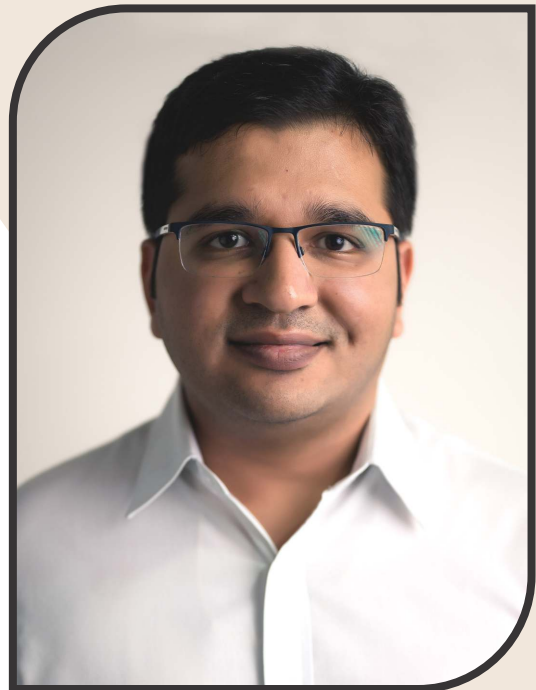
**Mahaveer Chowdhary**  
(Chairman & Managing Director)

Mr. Mahaveer Chowdhary manages the various business units and core functions responsible for developing and creating the company's products. He started out quite young, precisely around his graduation. Despite his young age, he could foresee that the organization had immense potential. The pathway towards the expansion lay in research into applied markets. It's his futuristic approach and belief that has turned the company into a renowned super specialty starch giant.



**Sumanth Chowdhary**  
(Executive Director)

Mr. Sumanth Chowdhary joined the company as a marketing executive and now handles aspects related to company strategy, planning, and operations. He is responsible for the company's market-leading portfolio and has served in a variety of executive roles. He looks after the acquisition and along with that provides oversight to the company's largest technology investment program for reliability, excellence, and quality.



**Shrikant Chowdhary**  
(Executive Director)

Mr. Shrikant Chowdhary is Executive Director of Enterprise Informatics; he is taking care of the development and commercialization of products and services which is intended at turning data into actionable information for researchers. He manages the implementation of firm policies around training, staffing, recruiting, and account management which not only results in a premium client base but even a positive work environment that encourages a pattern of long-term staff retention.



## INFRASTRUCTURE

We are located at Salem, Tamilnadu one of the highest growing regions of corn and tapioca in India. The plant is in proximity to major industrial cities such as Chennai, Bangalore, Hyderabad, Sivakasi, Coimbatore, Vishakhapatnam and many others which is an added marketing advantage. The plant has strategic export advantage as it is closely located to Chennai, Tuticorin and Kattupalli port. The Salem airport is just 49km away from our plant and Salem railway station is situated at a distance of 35km. The strategic location of the plant helps us to secure raw material with ease and cater to the huge demands of domestic as well as international markets.



# PRODUCT LIST

SR NO.	PRODUCT NAME	APPLICATIONS
FOOD/ INDUSTRIAL GRADE STARCHES		
1	CORN / MAIZE STARCH	MAIZE STARCH FOR GENERAL USE.
2	GLOSS-O-TX	TAPIOCA STARCH FOR GENERAL USE.
PAPER GRADE STARCHES		
3	SMILO-SPRAY	WET END SPRAY ADDITIVE FOR IMPROVING BURSTING STRENGTH OF PAPER.
4	SMILOX-M	OXIDIZED STARCH FOR SIZING OF PAPER.
5	SMIL-O-CAT	WET END CATIONIC STARCH FOR IMPROVED PAPER QUALITY AND PHYSICAL OPERATIONS.
6	SMILOSIZE 2000	HIGH VISCOSITY MODIFIED STARCH FOR DUPLEX PAPER TO OBTAIN HIGHER PASTING AND STABILITY.
7	SMILOSIZE 8000	MEDIUM VISCOSITY AND COST EFFECTIVE MODIFIED STARCH TO INCREASE STRENGTH IN KRAFT PAPER.
8	SMIL-O-COAT	MODIFIED STARCH FOR SPECIAL COATING & SURFACE SIZING OF PAPER.
TEXTILE GRADE STARCHES		
9	SMIL-O-SHOT	ONE SHOT SIZING SOLUTION FOR SIZING BOTTOMS AND DENIMS.
10	SMILOSE- B	THIN BOILING STARCH FOR SIZING AND FINISHING.
OTHER GRADE STARCHES		
12	SMIL-O-WD	WHITE DEXTRIN FOR VARIOUS INDUSTRIES.
13	SMIL-O-YD	YELLOW DEXTRIN FOR VARIOUS INDUSTRIES.
GYPSUM BOARD GRADE STARCH		
14	SMIL-O-GYP	MODIFIED STARCH USED AS MAJOR BINDING AGENT IN GYPSUM / PLASTERBOARD.
CORRUGATION GRADE STARCH		
15	SMIL-O-CG	ADHESIVE FOR CORRUGATION INDUSTRY.
BY PRODUCTS		
15	SMIL-O-GLUTEN	HIGH QUALITY MAIZE GLUTEN MEAL FOR CATTLE FEED AND POULTRY.
16	SMIL-O-GERM	HIGH QUALITY MAIZE GERM FOR CORN OIL INDUSTRY.
17	SMIL-O-FIBER	HIGH QUALITY MAIZE FIBER FOR CATTLE FEED AND DE-OIL CAKE INDUSTRY.




# SANTOSH<sup>TM</sup> LIMITED

Global Agro Ingredients Experts

 **Corporate and Registered Office**

2<sup>nd</sup> Floor Karma Complex,  
Near Mahalaxmi Cross Roads, Paldi,  
Ahmedabad-380007, Gujarat, India.

 Ph: +91-79-2665 1800/1900

 Fax: +91-79-2665 2090


 Email: [admin@santoshlimited.com](mailto:admin@santoshlimited.com)

 [www.santoshlimited.com](http://www.santoshlimited.com)

 **Factory / Works**

Unit: 135/1, "Santosh Nagar",  
Po. Mangalapuram-636 202. Tk. Rasipuram,  
Dist. Namakkal, Tamil Nadu, India.

 Tel: +91-4287-245601/02/03

 Fax: +91-4287-245254

 Email: [works@santoshlimited.com](mailto:works@santoshlimited.com)

 Web: [www.santoshlimited.com](http://www.santoshlimited.com)